



SILFAB

SLA-M 280/285/290/295/300



The Silfab SLA-M 60-cell monocrystalline module series is the result of the experience of the Silfab technical team, specialized in the entire photovoltaic value chain, with modules produced and operating for over 33 years.

The SLA-M modules are ideal for ground-mount, roof-top and solar tracking installations where maximum power density is preferred.

Maximum Efficiency

60 of the highest efficiency, best quality monocrystalline cells result in a maximum power rating of up to 300 Wp.

Positive Tolerance

(-0/+5W) module sorting achieves the maximum electrical performance of the PV system.

Industry Experts

Silfab's technical team has specialized experience in the entire photovoltaic value chain, with modules produced and operating for over 33 years.

Highest Automation

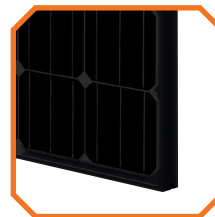
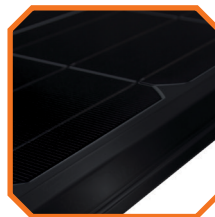
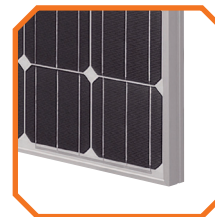
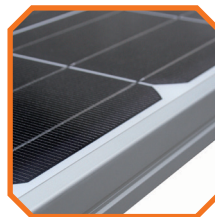
Strict quality controls during each step at one of the world's most automated module production facilities.

Increased Quality

Top quality materials and 100% EL testing guarantee a trustworthy 25-year performance warranty.

Reduced Weight

Engineered to accommodate low load bearing structures while maintaining highly durable mechanical characteristics including a maximum loading of 5400 Pa.



Available in Black



| Electrical Specifications - Standard Test Conditions | | SLA280M | SLA285M | SLA290M | SLA295M | SLA300M |
|--|----|---------|---------|---------|---------|---------|
| Module Power (Pmax) | Wp | 280 | 285 | 290 | 295 | 300 |
| Maximum power voltage (Vpmax) | V | 31.7 | 32.0 | 32.4 | 32.7 | 32.9 |
| Maximum power current (Ipmax) | A | 8.83 | 8.91 | 8.97 | 9.04 | 9.26 |
| Open circuit voltage (Voc) | V | 38.7 | 39.1 | 39.6 | 40 | 40.53 |
| Short circuit current (Isc) | A | 9.40 | 9.47 | 9.54 | 9.61 | 9.76 |
| Module efficiency | % | 17.1 | 17.4 | 17.8 | 18.06 | 18.8 |
| Maximum system voltage (VDC) | V | 1000 | | | | |
| Series fuse rating | A | 15 | | | | |
| Power tolerance | Wp | -0/+5 | | | | |

Measurement conditions: STC 1000 W/m² • AM 1.5 • Temperature 25 °C • Measurement uncertainty ≤ 3% • Sun simulator calibration reference modules from Fraunhofer Institute.
Electrical characteristics may vary by ±5% and power by -0/+5W.

| Temperature Ratings | SILFAB SLA Mono | |
|------------------------------|-----------------|---------|
| Temperature Coefficient Isc | %/K | 0.03 |
| Temperature Coefficient Voc | %/K | -0.30 |
| Temperature Coefficient Pmax | %/K | -0.38 |
| NOCT (± 2 °C) | °C | 45 |
| Operating temperature | °C | -40/+85 |

| Mechanical Properties and Components | SILFAB SLA Mono | |
|--------------------------------------|------------------|--|
| Module weight (± 1 kg) | kg | 19 |
| Dimensions (H x L x D; ± 1mm) | mm | 1650 x 990 x 38 |
| Maximum surface load (wind/snow)* | N/m ² | 5400 |
| Hail impact resistance | | Ø 25 mm at 83 km/h |
| Cells | | 60 - Si monocrystalline - 3 or 4 busbar - 156 x 156 mm |
| Glass | | 3.2 mm high transmittance, tempered, antireflective coating |
| Encapsulant | | PID-resistant EVA |
| Backsheet | | Multilayer polyester-based |
| Frame | | Anodized Al |
| Junction Box | | 3 diodes-45V/12A, IP67 |
| Cables and connectors* | | 1200 mm Ø 5.7 mm (4 mm ²), gzx connector, MC4 comparable |

* See installation manual

| Warranties | SILFAB SLA Mono | |
|------------------------------------|-----------------|---|
| Module product warranty | | 12 years 25 years |
| Linear power performance guarantee | | ≥ 97% end of 1 st year ≥ 90% end of 12 th year ≥ 82% end of 25 th year |

| Certifications | SILFAB SLA Mono | |
|----------------|--|--|
| Product | ULC ORD C1703, UL 1703, IEC 61215, IEC 61730, CEC listed UL Fire Rating: Type 2 (Type 1 on request) | |
| Factory | ISO 9001:2008 | |

Caution: Read the safety and installation manual before using this product.



Third-party generated pan files from PV Evolution Labs are available for 280M, 285M, 290M, 295M and 300M.



Silfab Solar Inc.
240 Courtneypark Drive East • Mississauga, Ontario Canada L5T 2S5
Tel +1 905-255-2501 • Fax +1 905-696-0267
info@silfab.ca • www.silfab.ca

